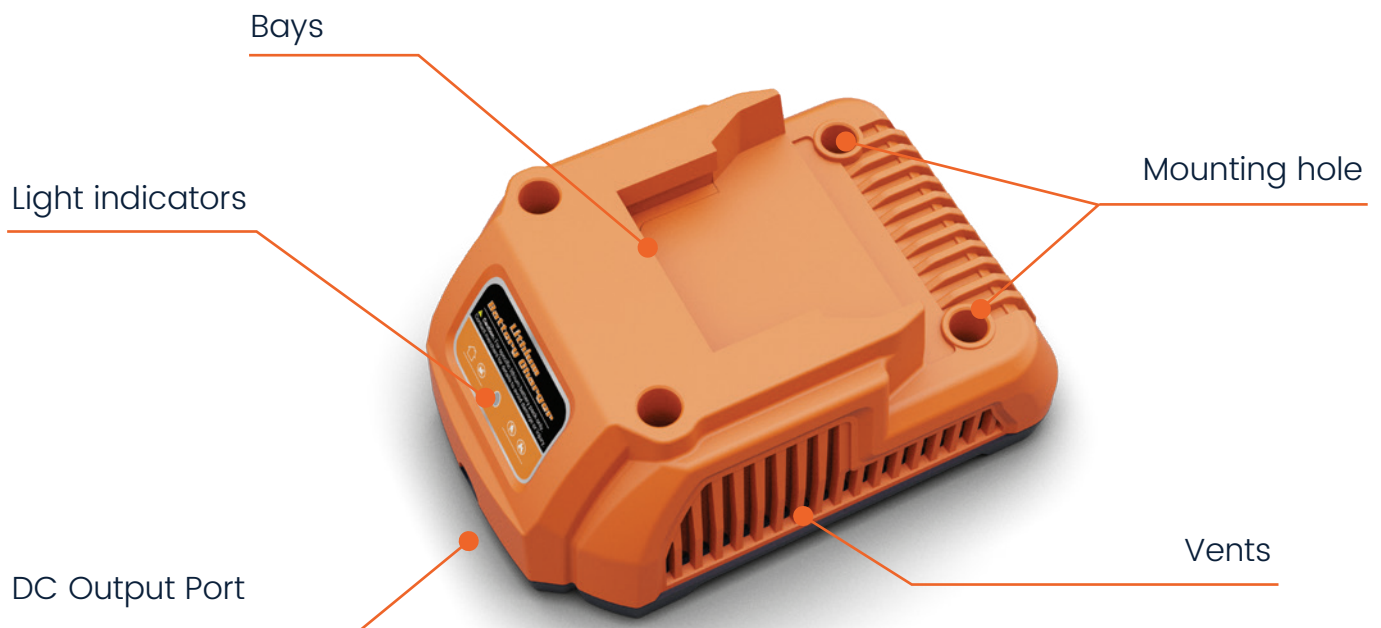


LITHIUM BATTERY CHARGER



FUNCTIONAL DESCRIPTION

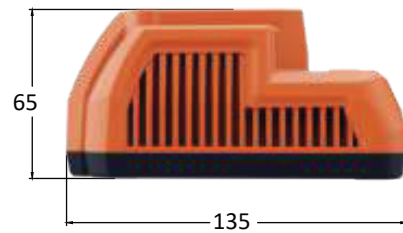


SPECIFICATIONS

MC-1

Input	AC 100-277V 1.5A
Output	29.4V 1A
Charge Time (Single D24-54)	95min
Working Temperature	0~40°C
Working Humidity	1~98%
Dimension	135x90x65mm
Weight	0.5kg

Size (mm)



Package

Size of Box	200x95x95mm
Gross Weight	0.6kg
Size of Carton	430x220x250mm
Gross Weight	5.0kg
Box Quantity/Carton	8Pcs

